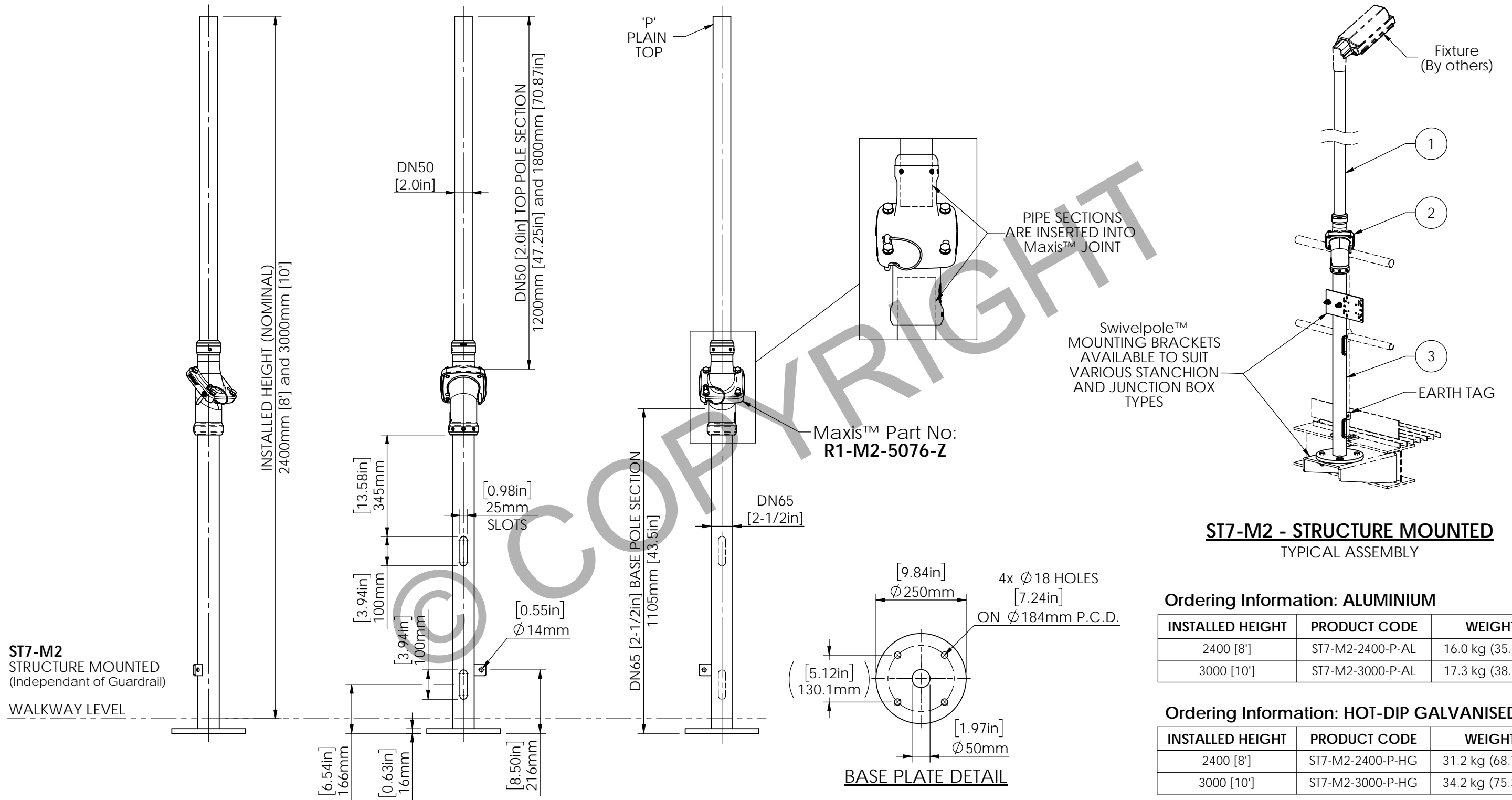


# STRUCTURALLY CERTIFIED

ITEM No.	QTY.	DESCRIPTION	MATERIAL OPTIONS
1	1	TOP POLE SECTION - PLAIN	STEEL / HOT-DIP GALVANISED ALUMINIUM
2	1	Maxis™ M2 JOINT	STEEL / ZINC ALUMINIUM COATING
3	1	BASE POLE SECTION - SLOTTED - SUPPLIED WITH CABLE SLOT GROMMETS	STEEL / HOT-DIP GALVANISED ALUMINIUM



**Ordering Information: ALUMINIUM**

INSTALLED HEIGHT	PRODUCT CODE	WEIGHT
2400 [8']	ST7-M2-2400-P-AL	16.0 kg (35.2 lb)
3000 [10']	ST7-M2-3000-P-AL	17.3 kg (38.1 lb)

**Ordering Information: HOT-DIP GALVANISED**

INSTALLED HEIGHT	PRODUCT CODE	WEIGHT
2400 [8']	ST7-M2-2400-P-HG	31.2 kg (68.7 lb)
3000 [10']	ST7-M2-3000-P-HG	34.2 kg (75.3 lb)

IEC



Scan Code with QR Reader app for more Swivelpole™ Solutions

**maxis**  
PATENTED PRODUCTS

[www.maxisjoint.com](http://www.maxisjoint.com)

**PATENTED PRODUCTS**

[www.swivelpole.com](http://www.swivelpole.com)

**Swivelpole™**

This document is the property of and protected by copyright owned by Swivelpole Group Pty Ltd and or Exemplar Products Pty Ltd. The designs and other information embodied in this document comprise confidential information of Swivelpole Group Pty Ltd and or Exemplar Products Pty Ltd and form part of products covered by international patents and registered designs including US patent No 6957832 and US patent No 9945143. Unauthorised use, reproduction and disclosure are strictly prohibited. This document must not be removed from the premises of the licensed user of this document without Swivelpole Group Pty Ltd's and or Exemplar Products Pty Ltd's prior approval.

ALL DIMENSIONS ARE IN MILLIMETERS / INCHES	SERIES / CODE	PART NUMBER
	ST	As Noted (RQ1626 - 19/01/2021)
DRAWN BY: BP	DATE: 07/09/20	TITLE: Swivelpole™ ST7 - Maxis™ M2
CHECKED BY: KM	DATE: 08/09/20	Base Section - SLOTTED - Top Section - PLAIN
APPROVED BY: AI	DATE: 09/09/20	General Assembly
THIRD ANGLE PROJECTION	SCALE: N.T.S.	DRG No: C-IEC-ST7-M2-6550-004-(HG-AL)

REV 1 A3