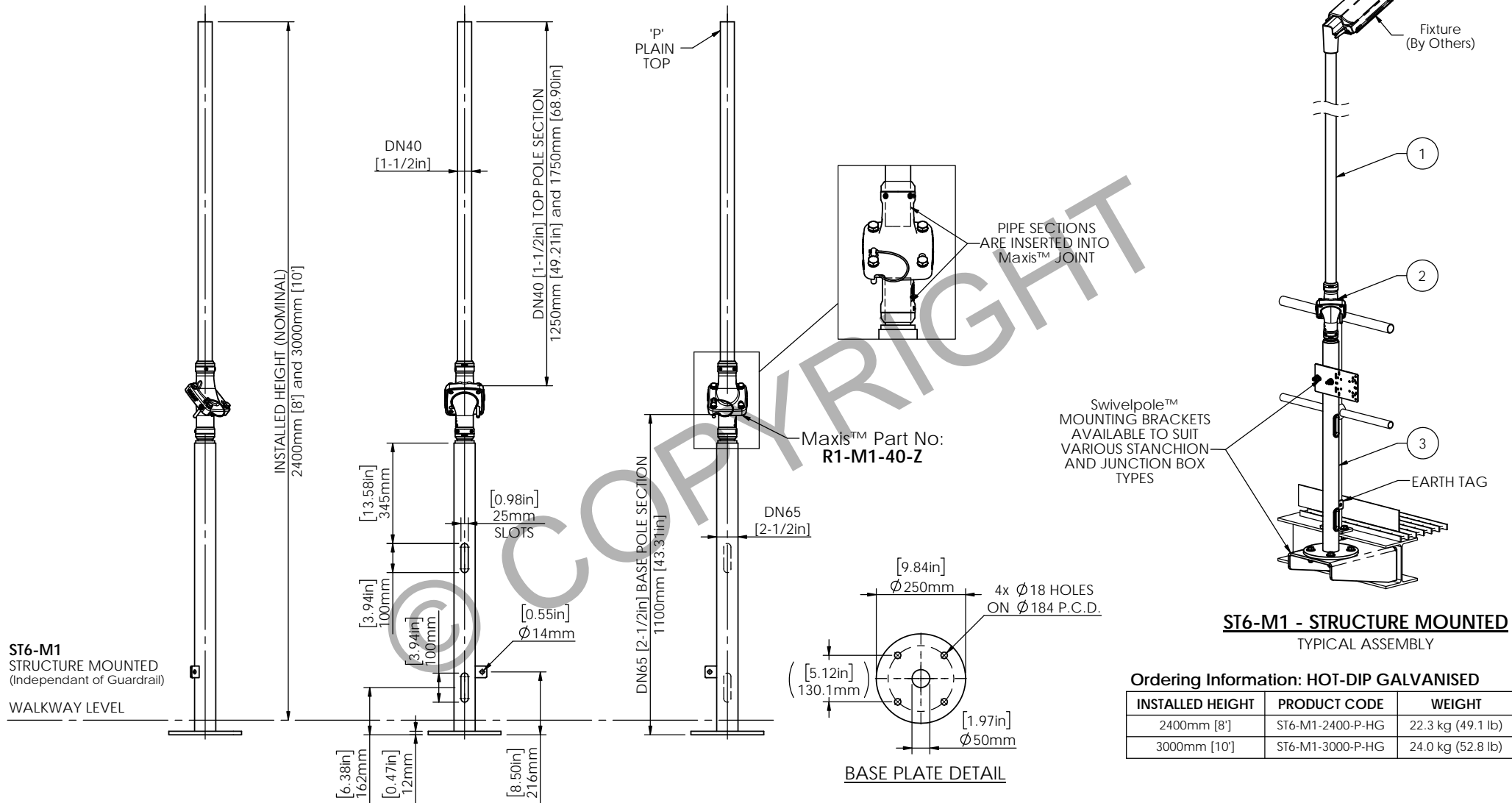


# STRUCTURALLY CERTIFIED

ITEM NO.	QTY.	DESCRIPTION	MATERIAL OPTIONS
1	1	TOP POLE SECTION - PLAIN	STEEL / HOT-DIP GALVANISED
2	1	Maxis™ M1 JOINT	STEEL / ZINC ALUMINIUM COATING
3	1	BASE POLE SECTION - SLOTTED cw REDUCER - SUPPLIED WITH CABLE SLOT GROMMET	STEEL / HOT-DIP GALVANISED



Scan Code with QR Reader app for more Swivelpole™ Solutions

**maxis**  
PATENTED  
PRODUCTS

[www.maxisjoint.com](http://www.maxisjoint.com)

**PATENTED**  
PRODUCTS

[www.swivelpole.com](http://www.swivelpole.com)

**Swivelpole**

This document is the property of and protected by copyright owned by Swivelpole Group Pty Ltd and/or Exemplar Products Pty Ltd. The designs and other information embodied in this document comprise confidential information of Swivelpole Group Pty Ltd and/or Exemplar Products Pty Ltd and form part of products covered by international patents and registered designs including US patent No 6957832 and US patent No 9945143. Unauthorised use, reproduction and disclosure are strictly prohibited. This document must not be removed from the premises of the licensed user of this document without Swivelpole Group Pty Ltd's and/or Exemplar Products Pty Ltd's prior approval.

ALL DIMENSIONS ARE IN MILLIMETERS / INCHES		SERIES / CODE	PART NUMBER
		ST	As Noted
DRAWN BY	BP	DATE	05/04/19
CHECKED BY	KM	DATE	08/04/19
APPROVED BY	AI	DATE	08/04/19
THIRD ANGLE PROJECTION	⊕	SCALE	N.T.S.
TITLE			DRG No
Swivelpole™ ST6 - Maxis™ M1 Base Section - SLOTTED - Top Section - PLAIN General Assembly			C-IEC-ST6-M1-6540-004-HG
			REV 5
			A3

IEC

(R01633 - 22/2/2021)