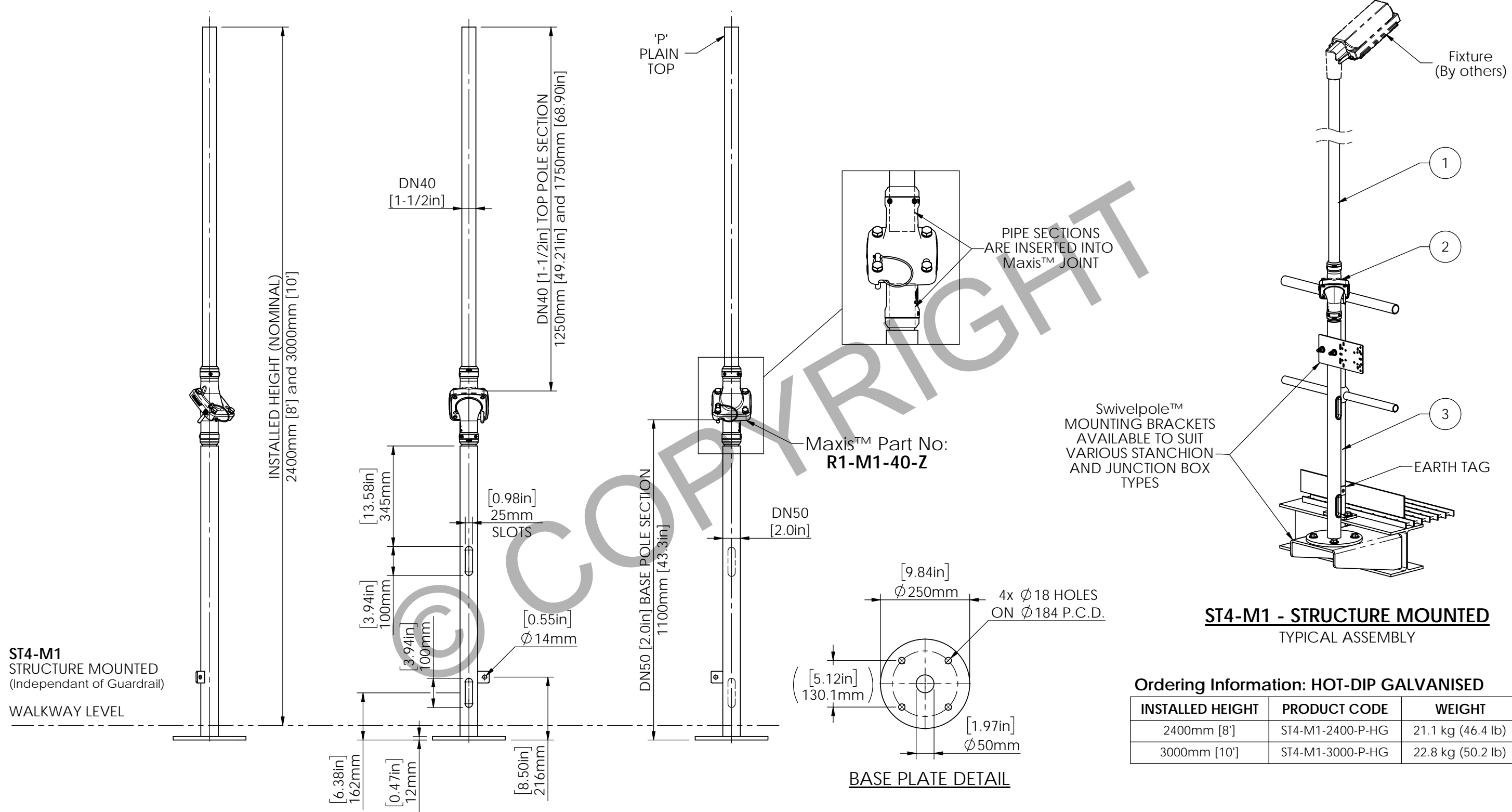


STRUCTURALLY CERTIFIED

ITEM NO.	QTY.	DESCRIPTION	MATERIAL OPTIONS
1	1	TOP POLE SECTION - PLAIN	STEEL / HOT-DIP GALVANISED
2	1	Maxis™ M1 JOINT	STEEL / ZINC ALUMINIUM COATING
3	1	BASE POLE SECTION - SLOTTED cw REDUCER - SUPPLIED WITH CABLE SLOT GROMMETS	STEEL / HOT-DIP GALVANISED



Scan Code with QR Reader app for more Swivelpole™ Solutions

maxis
PATENTED PRODUCTS

www.maxisjoint.com

PATENTED PRODUCTS

www.swivelpole.com

Swivelpole™

This document is the property of and protected by copyright owned by Swivelpole Group Pty Ltd and or Exemplar Products Pty Ltd. The designs and other information embodied in this document comprise confidential information of Swivelpole Group Pty Ltd and or Exemplar Products Pty Ltd and form part of products covered by international patents and registered designs including US patent No 6957832 and US patent No 9945143. Unauthorised use, reproduction and disclosure are strictly prohibited. This document must not be removed from the premises of the licensed user of this document without Swivelpole Group Pty Ltd's and or Exemplar Products Pty Ltd's prior approval.

ALL DIMENSIONS ARE IN MILLIMETERS / INCHES	SERIES / CODE ST	PART NUMBER As Noted	(RQ1633 - 22/2/2021)
DRAWN BY KM	DATE 21/7/20	TITLE Swivelpole™ ST4 - Maxis™ M1 Base Section - SLOTTED - Top Section - PLAIN General Assembly	
CHECKED BY AI	DATE 21/7/20		
APPROVED BY RP	DATE 21/7/20		
THIRD ANGLE PROJECTION	SCALE N.T.S.	DRG No C-IEC-ST4-M1-5040-004-HG	REV 3

IEC

A3