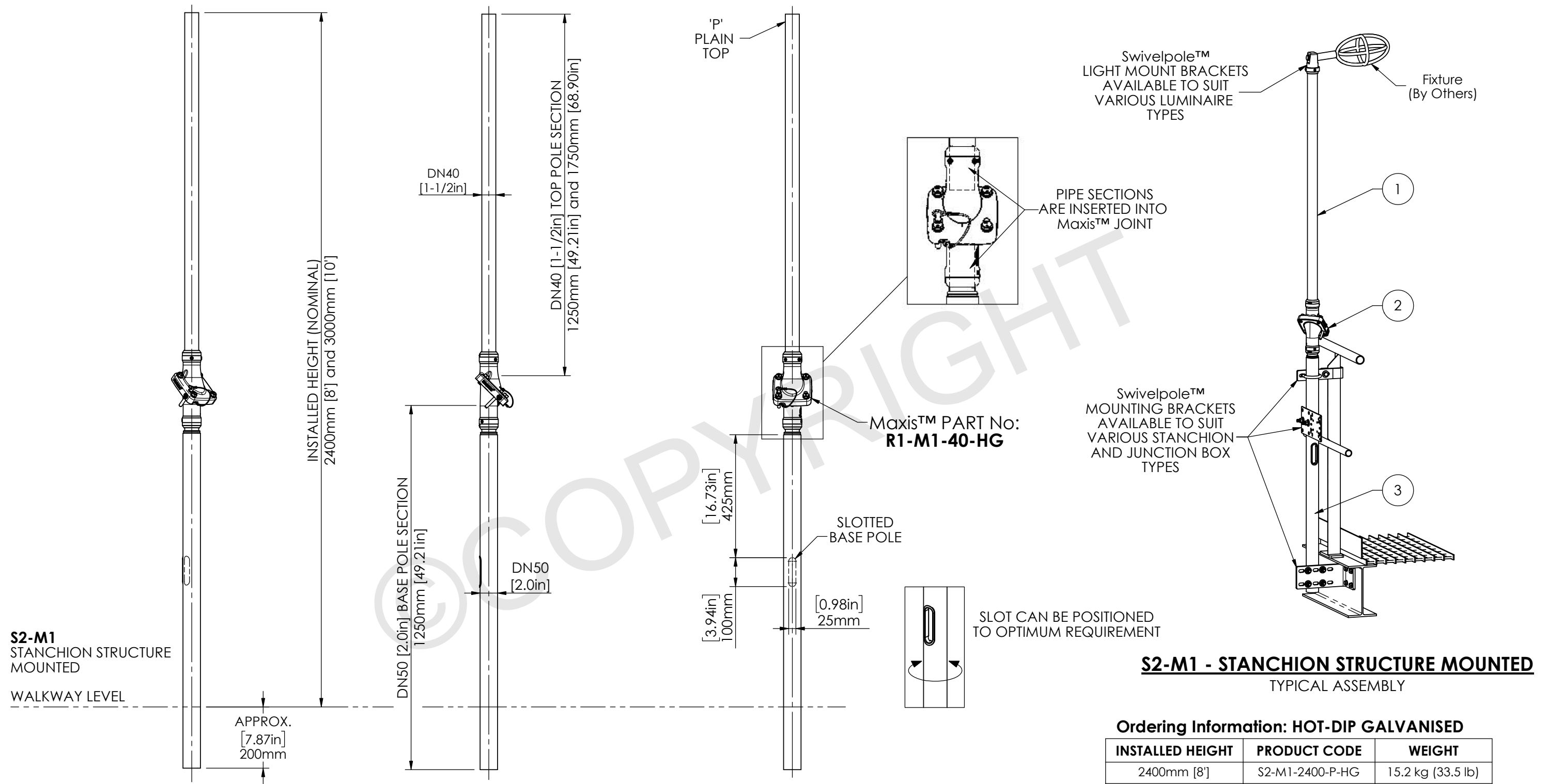


STRUCTURALLY CERTIFIED

ITEM NO.	QTY	DESCRIPTION	MATERIAL OPTIONS
1	1	TOP POLE SECTION - PLAIN	STEEL / HOT-DIP GALVANISED
2	1	Maxis™ M1 JOINT	STEEL / HOT-DIP GALVANISED
3	1	BASE POLE SECTION - SLOTTED cw REDUCER - SUPPLIED WITH CABLE SLOT GROMMET	STEEL / HOT-DIP GALVANISED



S2-M1 - STANCHION STRUCTURE MOUNTED TYPICAL ASSEMBLY

Ordering Information: HOT-DIP GALVANISED

INSTALLED HEIGHT	PRODUCT CODE	WEIGHT
2400mm [8']	S2-M1-2400-P-HG	15.2 kg (33.5 lb)
3000mm [10']	S2-M1-3000-P-HG	17.0 kg (37.4 lb)

S2-M1
STANCHION STRUCTURE
MOUNTED
WALKWAY LEVEL

APPROX.
[7.87in]
200mm



Scan Code with
QR Reader app for more
Swivelpole™ Solutions

maxis
PATENTED
PRODUCTS

www.maxisjoint.com

PATENTED
PRODUCTS

www.swivelpole.com

Swivelpole[™]

This document is the property of and protected by copyright owned by Swivelpole Group Pty Ltd and or Exemplar Products Pty Ltd. The designs and other information embodied in this document comprise confidential information of Swivelpole Group Pty Ltd and or Exemplar Products Pty Ltd and form part of products covered by international patents and registered designs including US patent No 6957832 and US patent No 9945143. Unauthorised use, reproduction and disclosure are strictly prohibited. This document must not be removed from the premises of the licensed user of this document without Swivelpole Group Pty Ltd's and or Exemplar Products Pty Ltd's prior approval.

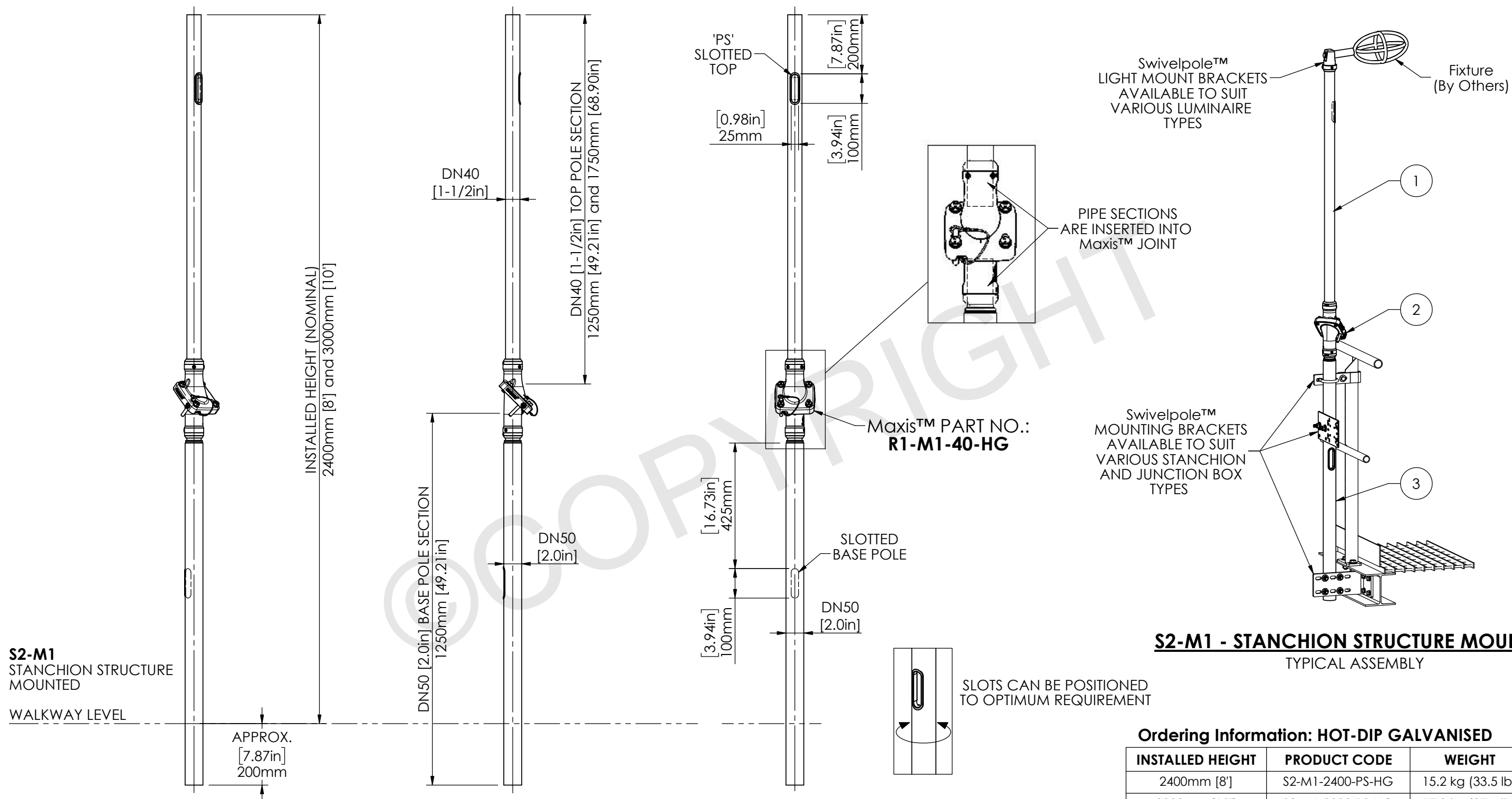
ALL DIMENSIONS ARE IN MILLIMETERS / INCHES	SERIES / CODE S	PART NUMBER As Noted (RQ2056 - 30/09/24)
DRAWN BY BP	DATE 05/04/19	TITLE Swivelpole™ S2 - Maxis™ M1
CHECKED BY KM	DATE 08/04/19	Base Section - SLOTTED - Top Section - PLAIN
APPROVED BY AI	DATE 08/04/19	General Assembly
THIRD ANGLE PROJECTION	SCALE N.T.S.	DRG No C-IEC-S2-M1-5040-P-HG

IEC

REV 7 A3

STRUCTURALLY CERTIFIED

ITEM NO.	QTY.	DESCRIPTION	MATERIAL
1	1	TOP POLE SECTION - SLOTTED - SUPPLIED WITH CABLE SLOT GROMMET	STEEL / HOT-DIP GALVANISED
2	1	Maxis™ M1 JOINT	STEEL / HOT-DIP GALVANISED
3	1	BASE POLE SECTION - SLOTTED c/w REDUCER - SUPPLIED WITH CABLE SLOT GROMMET	STEEL / HOT-DIP GALVANISED



IEC



Scan Code with QR Reader app for more Swivelpole™ Solutions

maxis™
PATENTED
PRODUCTS

www.maxisjoint.com

PATENTED
PRODUCTS

www.swivelpole.com

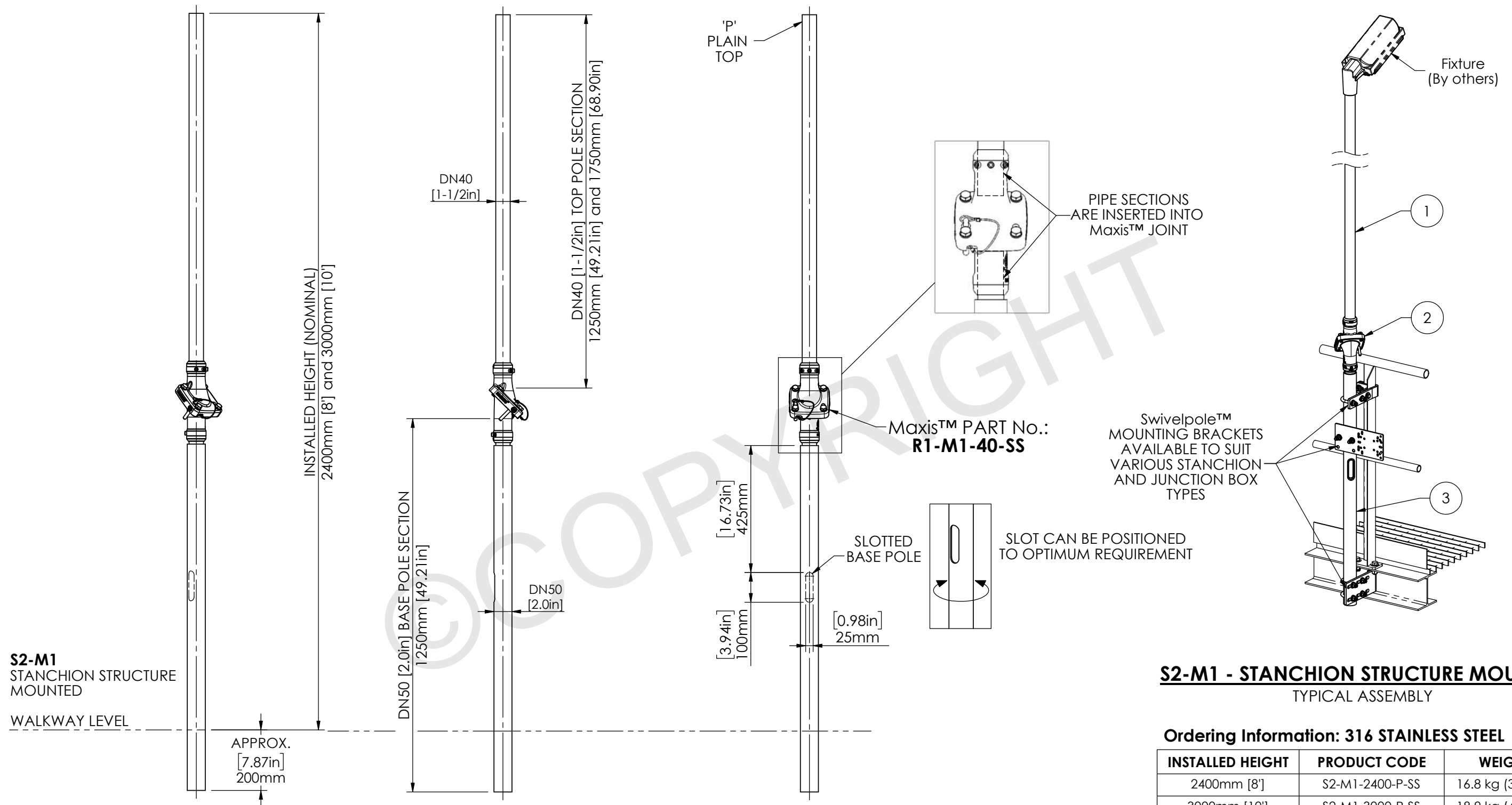
Swivelpole™

This document is the property of and protected by copyright owned by Swivelpole Group Pty Ltd and or Exemplar Products Pty Ltd. The designs and other information embodied in this document comprise confidential information of Swivelpole Group Pty Ltd and or Exemplar Products Pty Ltd and form part of products covered by international patents and registered designs including US patent No 6957832 and US patent No 9945143. Unauthorised use, reproduction and disclosure are strictly prohibited. This document must not be removed from the premises of the licensed user of this document without Swivelpole Group Pty Ltd's and or Exemplar Products Pty Ltd's prior approval.

ALL DIMENSIONS ARE IN MILLIMETERS / INCHES		SERIES / CODE	PART NUMBER
		S	As Noted
DRAWN BY	BP	DATE	11/05/22
CHECKED BY	KM	DATE	12/05/22
APPROVED BY	AI	DATE	13/05/22
THIRD ANGLE PROJECTION		SCALE	N.T.S.
TITLE			DRG No
Swivelpole™ S2 - Maxis™ M1 Base Section - SLOTTED - Top Section - SLOTTED General Assembly			C-IEC-S2-M1-5040-PS-HG
			REV 1 A3

STRUCTURALLY CERTIFIED

ITEM NO.	QTY	DESCRIPTION	MATERIAL OPTIONS
1	1	TOP POLE SECTION - PLAIN	316 STAINLESS STEEL
2	1	Maxis™ M1 JOINT	316 STAINLESS STEEL
3	1	BASE POLE SECTION - SLOTTED cw REDUCER - SUPPLIED WITH CABLE SLOT GROMMET	316 STAINLESS STEEL



S2-M1 - STANCHION STRUCTURE MOUNTED

TYPICAL ASSEMBLY

Ordering Information: 316 STAINLESS STEEL

INSTALLED HEIGHT	PRODUCT CODE	WEIGHT
2400mm [8']	S2-M1-2400-P-SS	16.8 kg (37.0 lb)
3000mm [10']	S2-M1-3000-P-SS	18.9 kg (41.6 lb)

IEC



Scan Code with QR Reader app for more Swivelpole™ Solutions

maxis
PATENTED
PRODUCTS

www.maxisjoint.com

PATENTED
PRODUCTS

www.swivelpole.com

Swivelpole™

This document is the property of and protected by copyright owned by Swivelpole Group Pty Ltd and or Exemplar Products Pty Ltd. The designs and other information embodied in this document comprise confidential information of Swivelpole Group Pty Ltd and or Exemplar Products Pty Ltd and form part of products covered by international patents and registered designs including US patent No 6957832 and US patent No 9945143. Unauthorised use, reproduction and disclosure are strictly prohibited. This document must not be removed from the premises of the licensed user of this document without Swivelpole Group Pty Ltd's and or Exemplar Products Pty Ltd's prior approval.

ALL DIMENSIONS ARE IN MILLIMETERS / INCHES	SERIES / CODE S	PART NUMBER As Noted (RQ1907 - 09/08/23)
DRAWN BY BP	DATE 04/01/21	TITLE Swivelpole™ S2 - Maxis™ M1
CHECKED BY KM	DATE 05/01/21	Base Section - SLOTTED - Top Section - PLAIN
APPROVED BY AI	DATE 06/01/21	General Assembly
THIRD ANGLE PROJECTION	SCALE N.T.S.	DRG No C-IEC-S2-M1-5040-P-SS

REV 1 A3