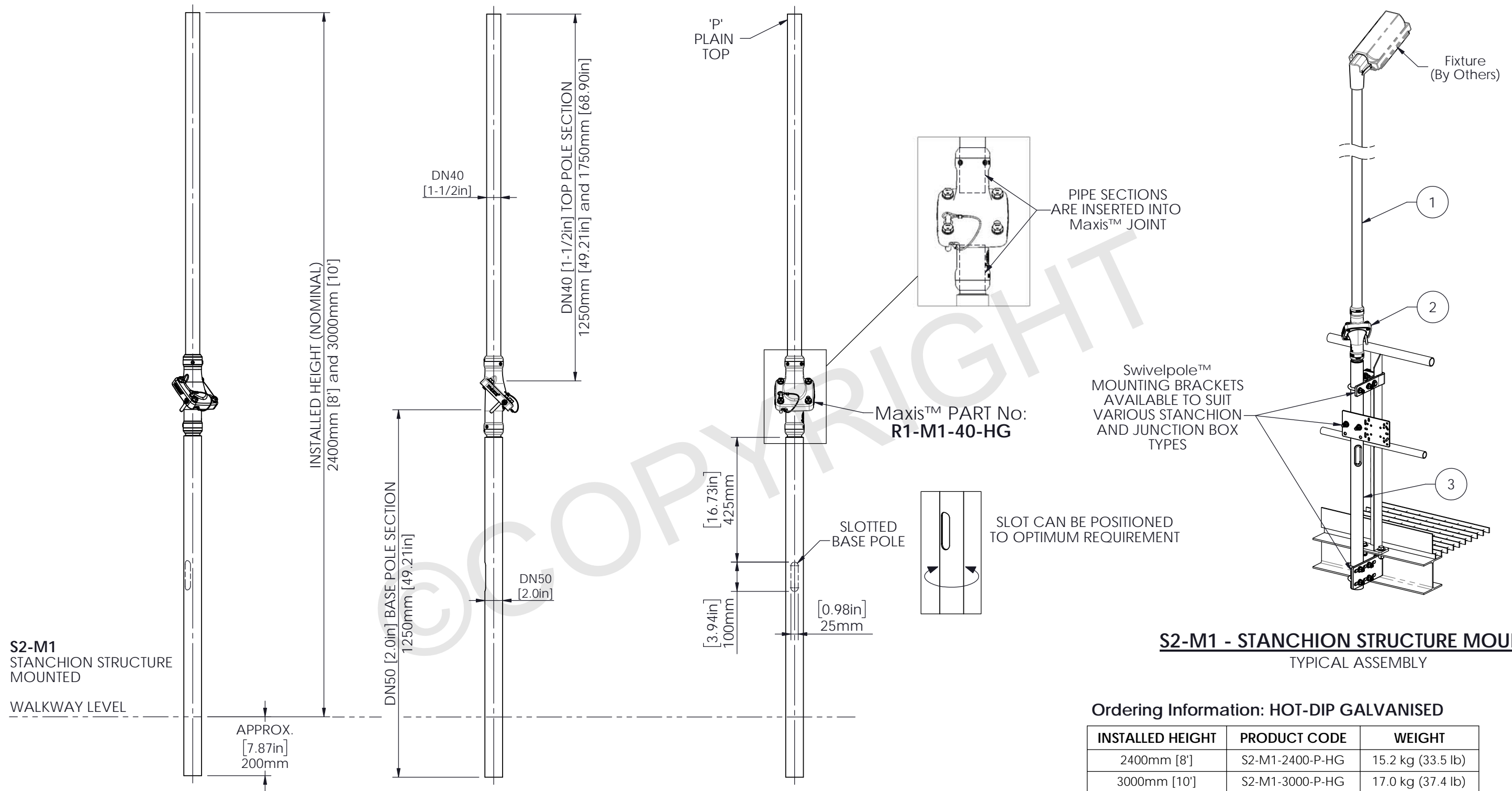


STRUCTURALLY CERTIFIED

ITEM NO.	QTY	DESCRIPTION	MATERIAL OPTIONS
1	1	TOP POLE SECTION - PLAIN	STEEL / HOT-DIP GALVANISED
2	1	Maxis™ M1 JOINT	STEEL / HOT-DIP GALVANISED
3	1	BASE POLE SECTION - SLOTTED cw REDUCER - SUPPLIED WITH CABLE SLOT GROMMET	STEEL / HOT-DIP GALVANISED



Ordering Information: HOT-DIP GALVANISED

INSTALLED HEIGHT	PRODUCT CODE	WEIGHT
2400mm [8']	S2-M1-2400-P-HG	15.2 kg (33.5 lb)
3000mm [10']	S2-M1-3000-P-HG	17.0 kg (37.4 lb)

IEC



Scan Code with QR Reader app for more Swivelpole™ Solutions

maxis
PATENTED PRODUCTS

www.maxisjoint.com

PATENTED
PRODUCTS

www.swivelpole.com

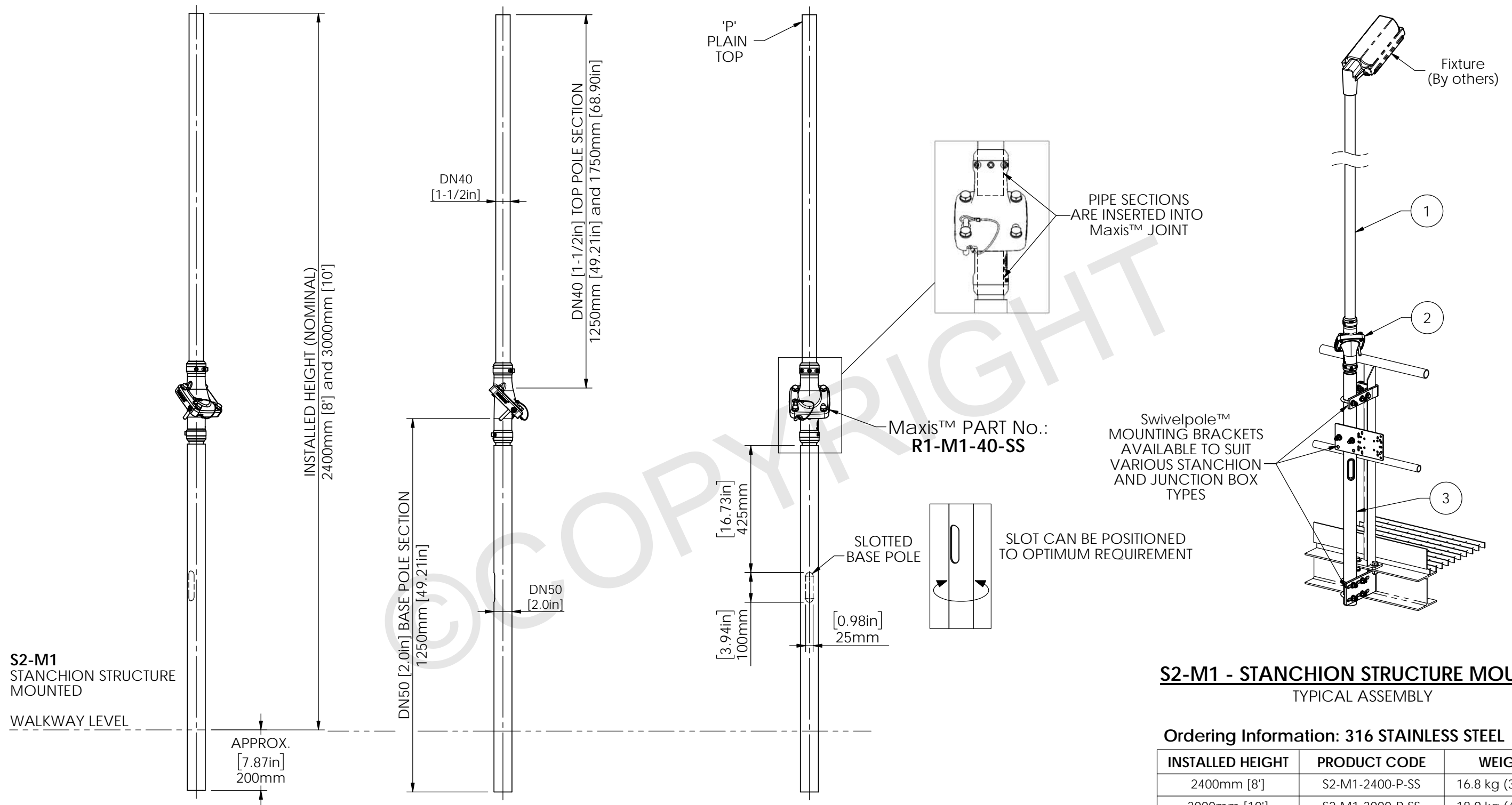
Swivelpole

This document is the property of and protected by copyright owned by Swivelpole Group Pty Ltd and or Exemplar Products Pty Ltd. The designs and other information embodied in this document comprise confidential information of Swivelpole Group Pty Ltd and or Exemplar Products Pty Ltd and form part of products covered by international patents and registered designs including US patent No 6957832 and US patent No 9945143. Unauthorised use, reproduction and disclosure are strictly prohibited. This document must not be removed from the premises of the licensed user of this document without Swivelpole Group Pty Ltd's and or Exemplar Products Pty Ltd's prior approval.

ALL DIMENSIONS ARE IN MILLIMETERS / INCHES		SERIES / CODE	PART NUMBER
		S	As Noted (RQ1835 - 14/02/23)
DRAWN BY	BP	DATE	05/04/19
CHECKED BY	KM	DATE	08/04/19
APPROVED BY	AI	DATE	08/04/19
THIRD ANGLE PROJECTION		SCALE	N.T.S.
TITLE			DRG No
Swivelpole™ S2 - Maxis™ M1 Base Section - SLOTTED - Top Section - PLAIN General Assembly			C-IEC-S2-M1-5040-P-HG
			REV 6 A3

STRUCTURALLY CERTIFIED

ITEM NO.	QTY	DESCRIPTION	MATERIAL OPTIONS
1	1	TOP POLE SECTION - PLAIN	316 STAINLESS STEEL
2	1	Maxis™ M1 JOINT	316 STAINLESS STEEL
3	1	BASE POLE SECTION - SLOTTED cw REDUCER - SUPPLIED WITH CABLE SLOT GROMMET	316 STAINLESS STEEL



S2-M1 - STANCHION STRUCTURE MOUNTED TYPICAL ASSEMBLY

Ordering Information: 316 STAINLESS STEEL

INSTALLED HEIGHT	PRODUCT CODE	WEIGHT
2400mm [8']	S2-M1-2400-P-SS	16.8 kg (37.0 lb)
3000mm [10']	S2-M1-3000-P-SS	18.9 kg (41.6 lb)

IEC



Scan Code with QR Reader app for more Swivelpole™ Solutions

maxis
PATENTED
PRODUCTS

www.maxisjoint.com

PATENTED
PRODUCTS

www.swivelpole.com

Swivelpole™

This document is the property of and protected by copyright owned by Swivelpole Group Pty Ltd and or Exemplar Products Pty Ltd. The designs and other information embodied in this document comprise confidential information of Swivelpole Group Pty Ltd and or Exemplar Products Pty Ltd and form part of products covered by international patents and registered designs including US patent No 6957832 and US patent No 9945143. Unauthorised use, reproduction and disclosure are strictly prohibited. This document must not be removed from the premises of the licensed user of this document without Swivelpole Group Pty Ltd's and or Exemplar Products Pty Ltd's prior approval.

ALL DIMENSIONS ARE IN MILLIMETERS / INCHES	SERIES / CODE S	PART NUMBER As Noted (RQ1907 - 09/08/23)
DRAWN BY BP	DATE 04/01/21	TITLE Swivelpole™ S2 - Maxis™ M1 Base Section - SLOTTED - Top Section - PLAIN General Assembly
CHECKED BY KM	DATE 05/01/21	
APPROVED BY AI	DATE 06/01/21	
THIRD ANGLE PROJECTION	SCALE N.T.S.	DRG No C-IEC-S2-M1-5040-P-SS

REV 1 A3