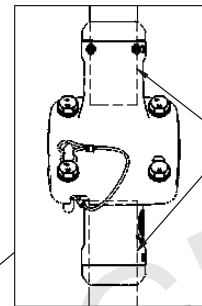
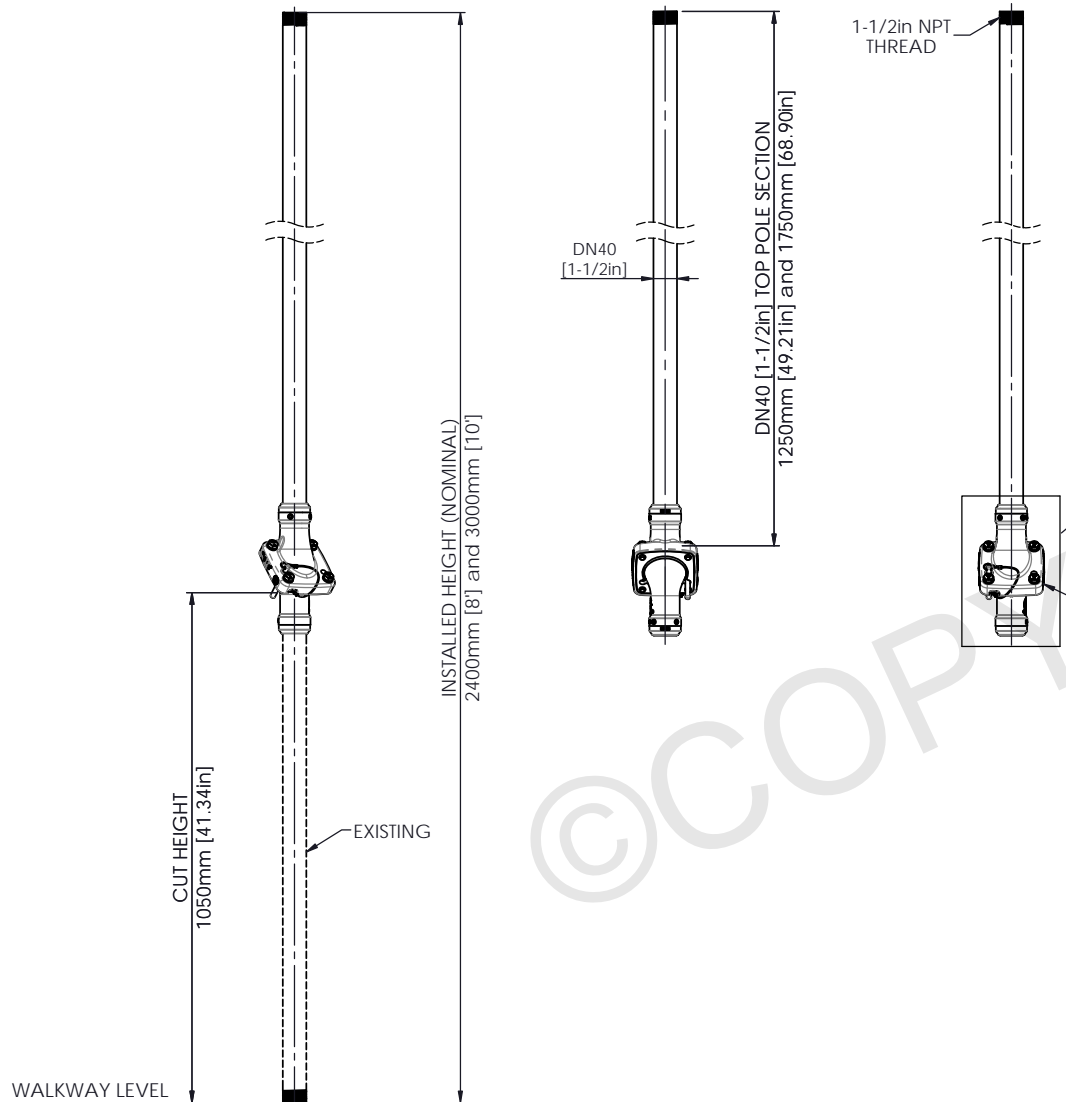


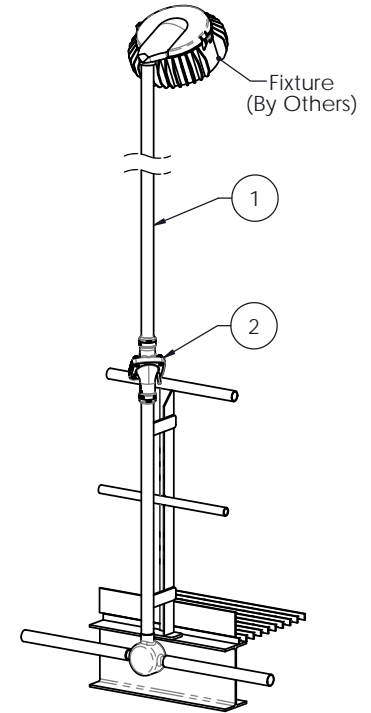
STRUCTURALLY CERTIFIED

ITEM NO.	QTY.	DESCRIPTION	MATERIAL OPTIONS
1	1	TOP POLE SECTION - THREADED	STEEL / HOT-DIP GALVANIZED ALUMINUM
2	1	Maxis™ M1 JOINT	STEEL / HOT-DIP GALVANIZED



PIPE SECTIONS
ARE INSERTED INTO
Maxis™ JOINT

Maxis™ PART No:
R1-M1-40-HG



R2-M1-40 : Maxis™ M1 and TOP POLE ATTACHED TO EXISTING BASE POLE & STRUCTURE TYPICAL ASSEMBLY

Ordering Information: ALUMINUM

INSTALLED HEIGHT	PRODUCT CODE	WEIGHT
2400mm [8']	R2-M1-40-2400-T-AL	6.7 kg (14.8 lb)
3000mm [10']	R2-M1-40-3000-T-AL	7.7 kg (17.0 lb)

Ordering Information: HOT-DIP GALVANIZED

INSTALLED HEIGHT	PRODUCT CODE	WEIGHT
2400mm [8']	R2-M1-40-2400-T-HG	9.4 kg (20.7 lb)
3000mm [10']	R2-M1-40-3000-T-HG	11.4 kg (25.1 lb)



Scan Code with
QR Reader app for more
Swivelpole™ Solutions

maxis[®]
PATENTED
PRODUCTS

www.maxisjoint.com

PATENTED
PRODUCTS

www.swivelpole.com

Swivelpole[™]

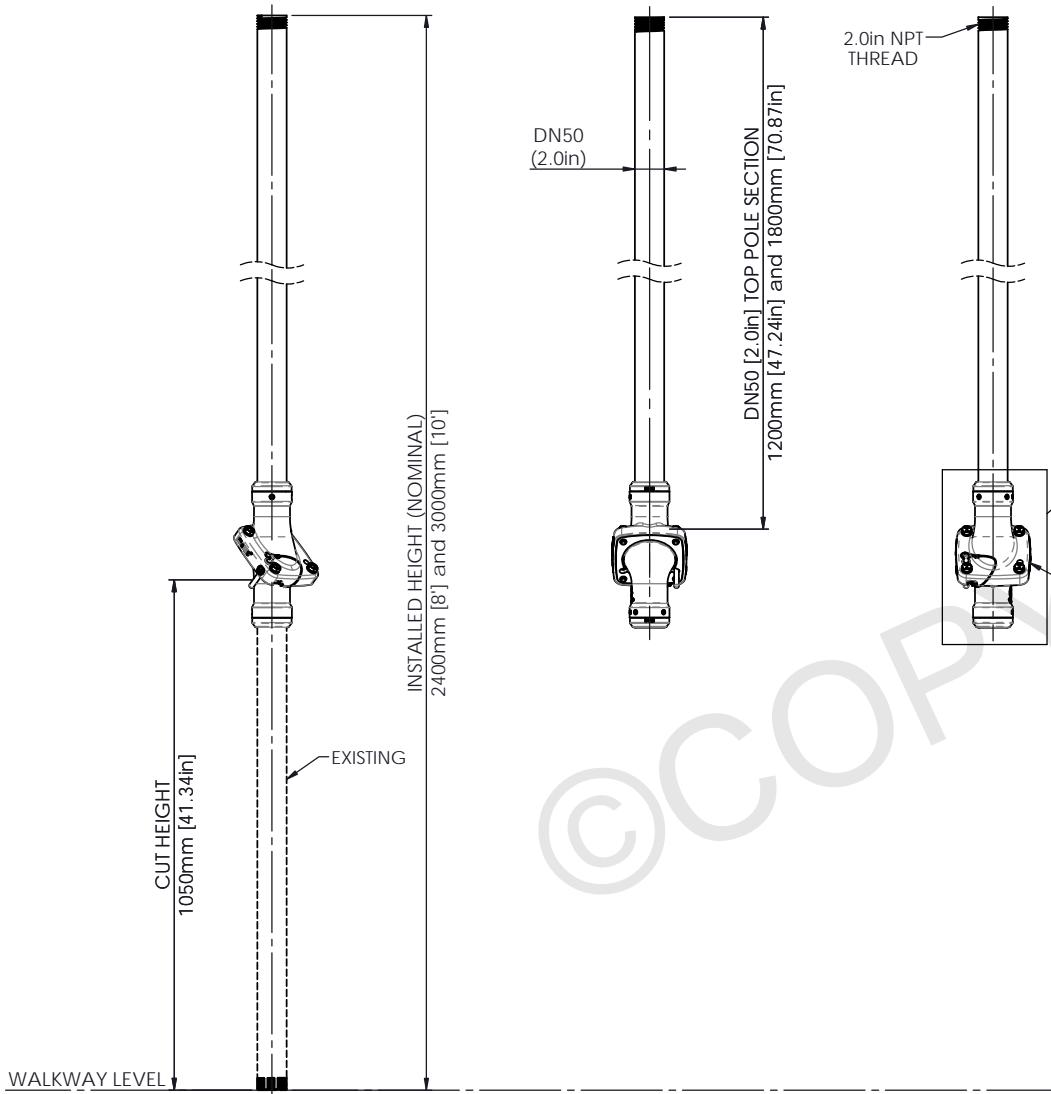
This document is the property of and protected by copyright owned by Swivelpole Group Pty Ltd and/or Exemplar Products Pty Ltd. The designs and other information embodied in this document comprise confidential information of Swivelpole Group Pty Ltd and/or Exemplar Products Pty Ltd and form part of products covered by international patents and registered designs including US patent No 6957832 and US patent No 9945143. Unauthorised use, reproduction and disclosure are strictly prohibited. This document must not be removed from the premises of the licensed user of this document without Swivelpole Group Pty Ltd's and/or Exemplar Products Pty Ltd's prior approval.

ALL DIMENSIONS ARE IN MILLIMETERS / INCHES		SERIES / CODE	PART NUMBER
		R	As Noted (RQ1804 - 10/11/22)
DRAWN BY	DATE	TITLE	
KM	20/02/19	Swivelpole™ R2 - Maxis™ M1	
CHECKED BY	DATE	Top Section - THREADED	
BP	21/02/19	General Assembly	
APPROVED BY	DATE	DRG No	
RP	21/02/19	C-NEC-R2-M1-40-T-(HG-AL)	
THIRD ANGLE PROJECTION	SCALE	N.T.S.	REV 2 A3

NEC

STRUCTURALLY CERTIFIED

ITEM NO.	QTY.	DESCRIPTION	MATERIAL OPTIONS
1	1	TOP POLE SECTION - THREADED	STEEL / HOT-DIP GALVANIZED
2	1	Maxis™ M2 JOINT	STEEL / HOT-DIP GALVANIZED



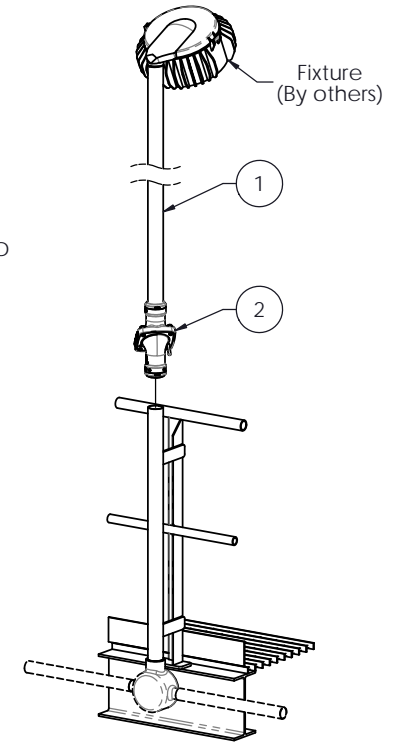
2.0in NPT
THREAD

DN50
(2.0in)

DN50 [2.0in] TOP POLE SECTION
1200mm [47.24in] and 1800mm [70.87in]

Maxis™ Part No:
R1-M2-50-HG

PIPE SECTIONS
ARE INSERTED INTO
Maxis™ JOINT



R2-M2-50 : Maxis™ M2 and TOP POLE ATTACHED TO EXISTING BASE POLE & STRUCTURE TYPICAL ASSEMBLY

Ordering Information: HOT-DIP GALVANIZED

INSTALLED HEIGHT	PRODUCT CODE	WEIGHT
2400mm [8']	R2-M2-50-2400-T-HG	12.7 kg (28.0 lb)
3000mm [10']	R2-M2-50-3000-T-HG	15.9 kg (35.0 lb)



Scan Code with
QR Reader app for more
Swivelpole™ Solutions

maxis[®]
PATENTED
PRODUCTS

www.maxisjoint.com

PATENTED
PRODUCTS

www.swivelpole.com

Swivelpole™

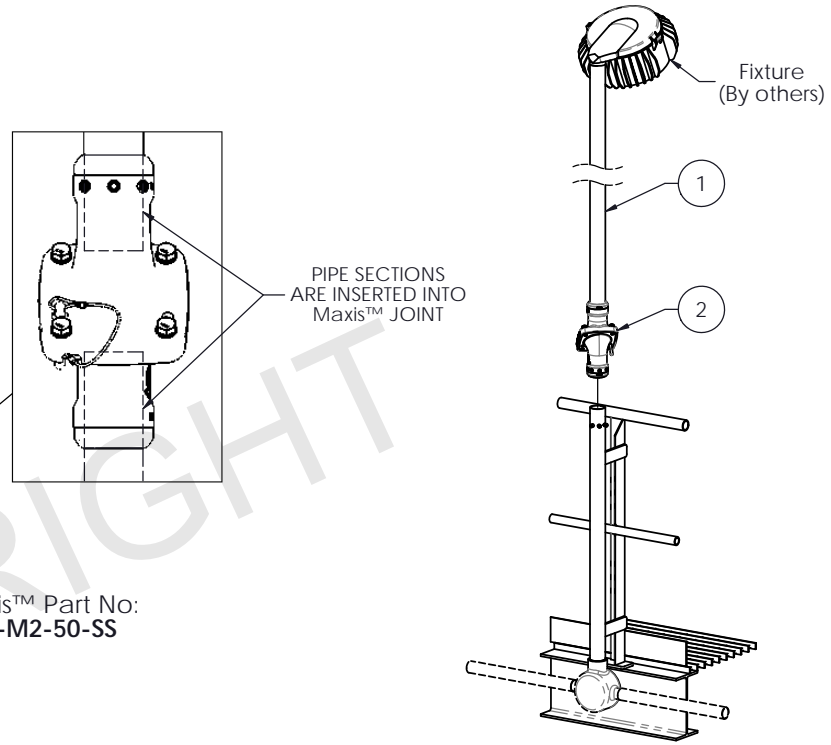
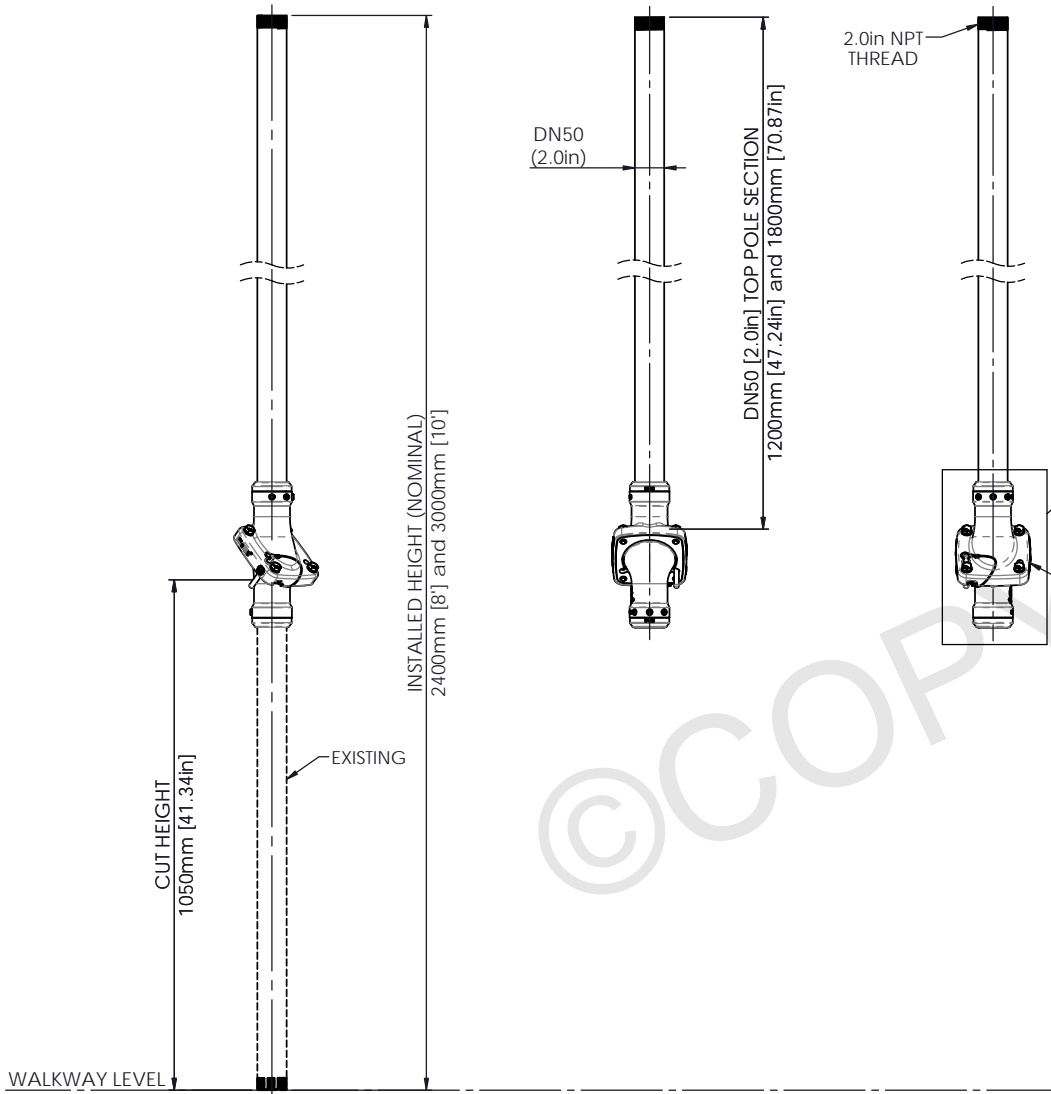
This document is the property of and protected by copyright owned by Swivelpole Group Pty Ltd and or Exemplar Products Pty Ltd. The designs and other information embodied in this document comprise confidential information of Swivelpole Group Pty Ltd and or Exemplar Products Pty Ltd and form part of products covered by international patents and registered designs including US patent No 6957832 and US patent No 9945143. Unauthorised use, reproduction and disclosure are strictly prohibited. This document must not be removed from the premises of the licensed user of this document without Swivelpole Group Pty Ltd's and or Exemplar Products Pty Ltd's prior approval.

ALL DIMENSIONS ARE IN MILLIMETERS / INCHES		SERIES / CODE	PART NUMBER
		R	As Noted
DRAWN BY	KM	DATE	02/03/23
CHECKED BY	AO	DATE	02/03/23
APPROVED BY	AI	DATE	02/03/23
THIRD ANGLE PROJECTION		SCALE	N.T.S.
TITLE			DRG No
Swivelpole™ R2 - Maxis™ M2 Top Section - THREADED General Assembly			C-NEC-R2-M2-50-T-HG
			REV 0 A3

NEC

STRUCTURALLY CERTIFIED

ITEM NO.	QTY.	DESCRIPTION	MATERIAL OPTIONS
1	1	TOP POLE SECTION - THREADED	316 STAINLESS STEEL
2	1	Maxis™ M2 JOINT	316 STAINLESS STEEL



R2-M2-50 : Maxis™ M2 and TOP POLE ATTACHED TO EXISTING BASE POLE & STRUCTURE TYPICAL ASSEMBLY

Ordering Information: 316 STAINLESS STEEL

INSTALLED HEIGHT	PRODUCT CODE	WEIGHT
2400mm [8']	R2-M2-50-2400-T-SS	13.3 kg (29.3 lb)
3000mm [10']	R2-M2-50-3000-T-SS	16.3 kg (35.9 lb)



Scan Code with QR Reader app for more Swivelpole™ Solutions

maxis[®]
PATENTED
PRODUCTS

www.maxisjoint.com

PATENTED
PRODUCTS

www.swivelpole.com

Swivelpole[™]

This document is the property of and protected by copyright owned by Swivelpole Group Pty Ltd and or Exemplar Products Pty Ltd. The designs and other information embodied in this document comprise confidential information of Swivelpole Group Pty Ltd and or Exemplar Products Pty Ltd and form part of products covered by international patents and registered designs including US patent No 6957832 and US patent No 9945143. Unauthorised use, reproduction and disclosure are strictly prohibited. This document must not be removed from the premises of the licensed user of this document without Swivelpole Group Pty Ltd's and or Exemplar Products Pty Ltd's prior approval.

ALL DIMENSIONS ARE IN MILLIMETERS / INCHES		SERIES / CODE	PART NUMBER
		R	As Noted
DRAWN BY	KM	DATE	02/03/23
CHECKED BY	AO	DATE	02/03/23
APPROVED BY	AI	DATE	02/03/23
THIRD ANGLE PROJECTION	⊕ - ⊖	SCALE	N.T.S.
TITLE			Swivelpole™ R2 - Maxis™ M2 Top Section - THREADED General Assembly
DRG No			C-NEC-R2-M2-50-T-SS
REV			0
A3			

NEC